

KENSINGTON

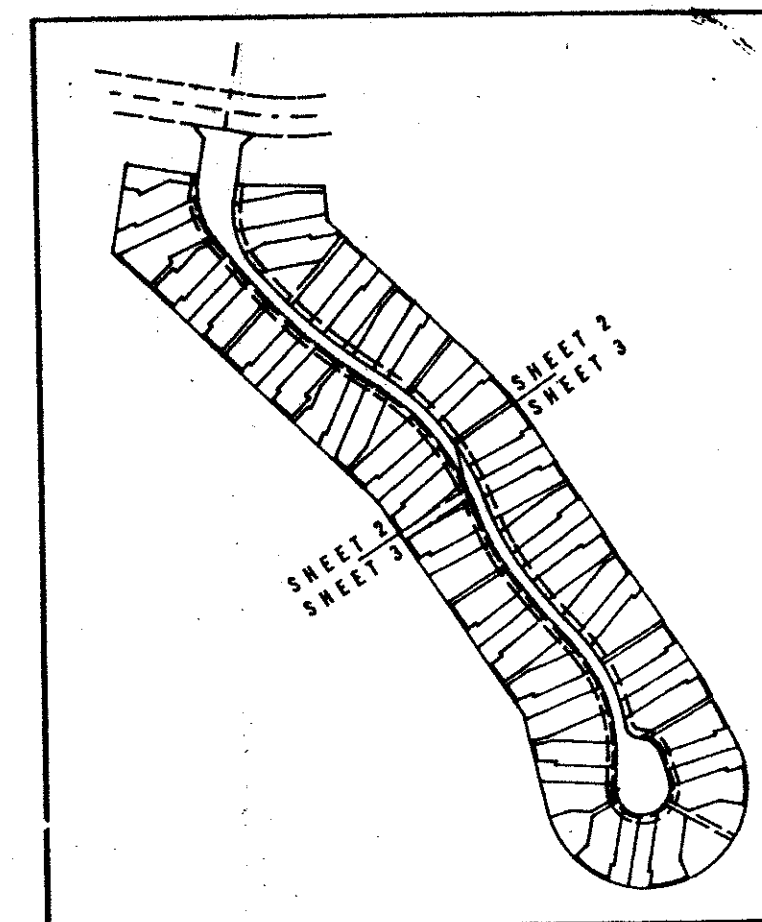
OF PALM BEACH POLO AND COUNTRY CLUB WELLINGTON P.U.D.

IN SECTION 14 - TOWNSHIP 44 SOUTH - RANGE 41 EAST
PALM BEACH COUNTY - FLORIDA

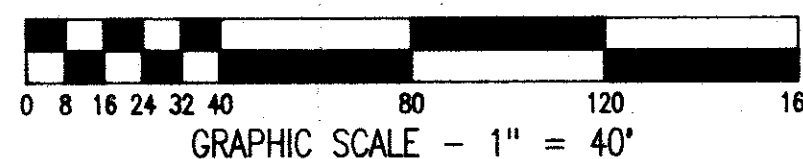
IN 3 SHEETS

SHEET 3

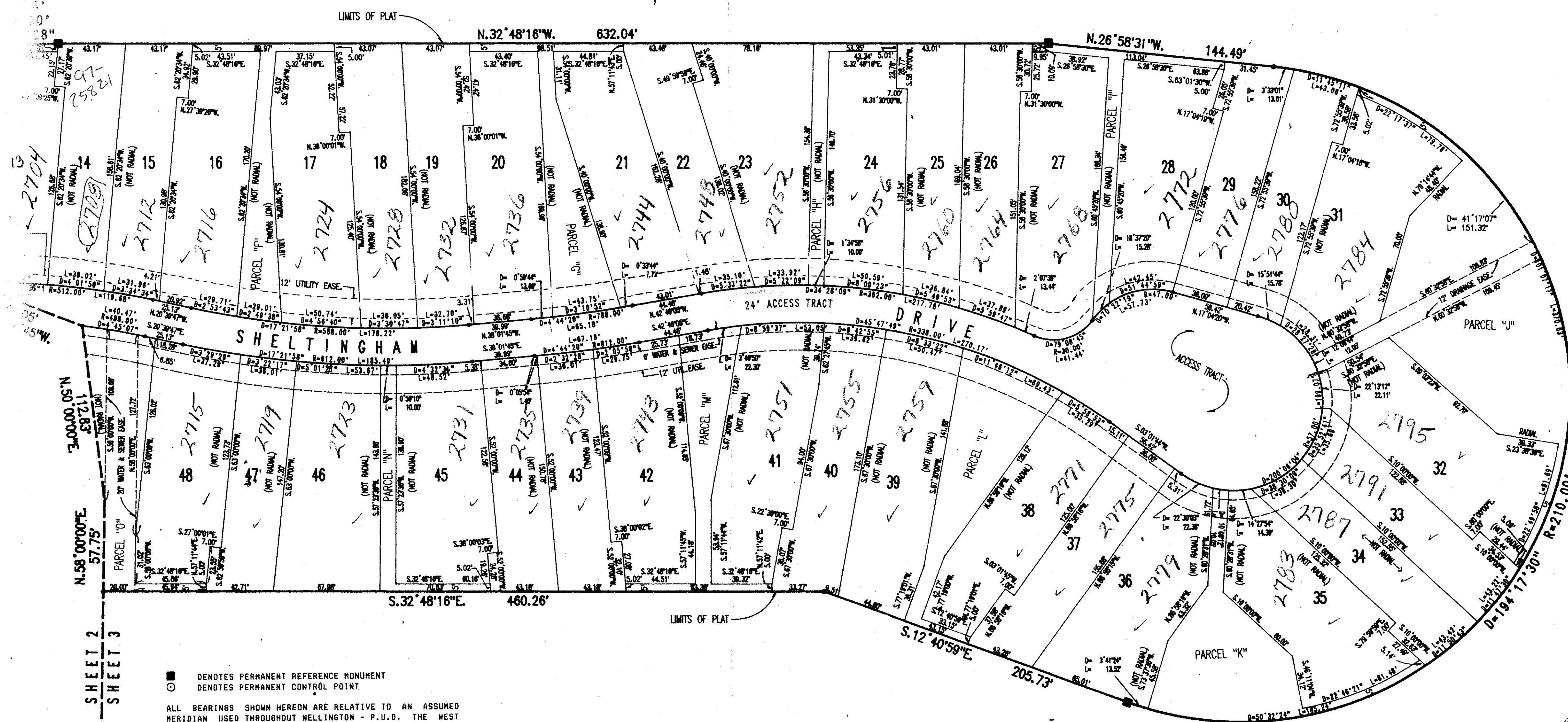
MARCH - 1988



PLAT INDEX
1" = 400'



UNPLATTED



■ DENOTES PERMANENT REFERENCE MONUMENT
 ○ DENOTES PERMANENT CONTROL POINT
 ALL BEARINGS SHOWN HEREON ARE RELATIVE TO AN ASSUMED MERIDIAN USED THROUGHOUT WELLINGTON - P.U.D. THE WEST LINE OF SECTION 14-44-41 IS ASSUMED TO BEAR NORTH 01°03'05" EAST.
 BUILDING SETBACK LINES SHALL BE AS REQUIRED BY PALM BEACH COUNTY ZONING REGULATIONS.
 NO BUILDINGS, NOR ANY KIND OF CONSTRUCTION, SHALL BE PLACED ON UTILITY, DRAINAGE, WATER, OR SEWER EASEMENTS.
 NO STRUCTURES, TREES OR SHRUBS SHALL BE PLACED IN THE DRAINAGE WATER AND SEWER, OR UTILITY EASEMENTS FOR WATER OR SEWER.
 APPROVAL OF LANDSCAPING ON UTILITY EASEMENTS, OTHER THAN WATER AND SEWER, SHALL BE ONLY WITH THE APPROVAL OF ALL UTILITIES OCCUPYING SAME.
 WHERE DRAINAGE, UTILITY, WATER, OR SEWER EASEMENTS CROSS, DRAINAGE EASEMENTS SHALL TAKE PRECEDENCE.
 ACME IMPROVEMENT DISTRICT SHALL HAVE THE RIGHT TO CONSTRUCT AND MAINTAIN WATER AND SEWER FACILITIES WITHIN UTILITY EASEMENTS AND ACCESS TRACTS AS SHOWN HEREON.
 THERE MAY BE ADDITIONAL RESTRICTIONS WHICH ARE NOT RECORDED ON THIS PLAT THAT MAY BE FOUND IN THE PUBLIC RECORDS OF PALM BEACH COUNTY, FLORIDA.

SUBDIVISION Kensington 16 Pds.
 BOOK 62 AR 1008
 PLAT 62 AR 33414
 QUAS 62 Wellington P.U.D.
 SE 86-32
 PUD NAME

PREPARED BY
 CHECKED BY

0332-069

62/71

Pet. 86-32

KENSINGTON


Dailey-Fotony, inc.
 land surveyors, planners, engineers
5050 10th Avenue North, Suite B - Lake Worth, Florida 33463
 Phone 306/985-8787

THIS INSTRUMENT PREPARED BY:
 PAUL J. FOTONY OF DAILEY-FOTONY, INC.
 8000 LAKE WORTH BOULEVARD, SUITE B
 LAKE WORTH, FLORIDA 33463